

# Shift linkage adjustment problem

Do you find that you are having a problem adjusting your shift linkage? You seem to be able to get forward gears but not reverse or if you adjust to get reverse you have lost 4<sup>th</sup> and 5th. Following the published directions on how to adjust linkage does not solve your problem.

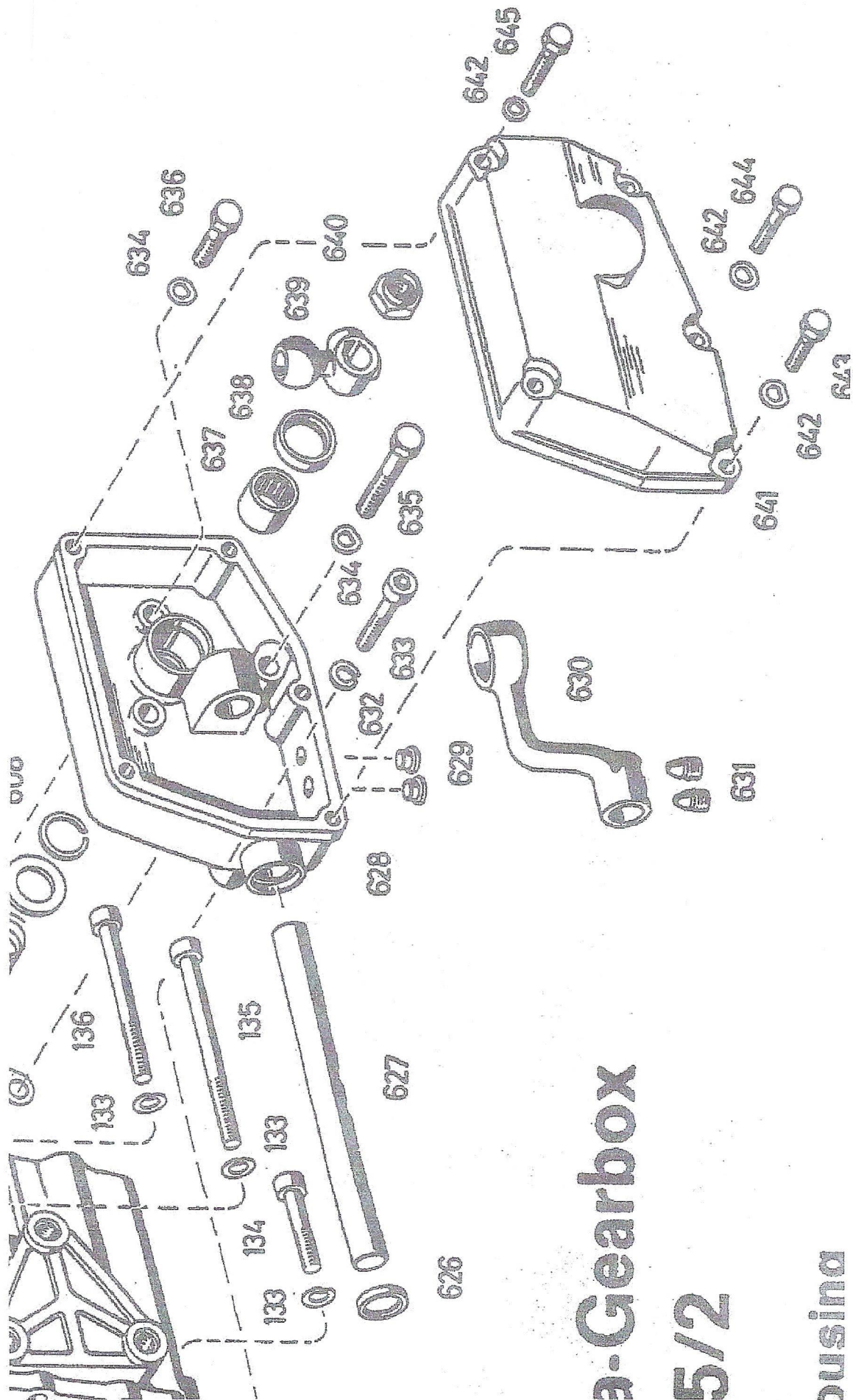
Well now it is time to verify that the grub screws (set screws) no. **631** that hold the selector arm **630** onto the gearshift operating shaft **627** are tight. These can be accessed by removing rubber plugs **629** from the bottom of the selector housing **628** and tightening with a 5mm hex wrench.

The gear shift needs to be in neutral to get the set screws to line up with the openings. We found that the forward hole could not be accessed with a hex bit but a standard ell shaped wrench might work; however, by moving the shifter into third gear the front set screw now is accessible through the rear opening.

Tighten set screws as tight as you can without breaking your hex wrench. I suggest removing the set screws one at a time and using blue Loctite to keep them from loosening.

Once you have completed this you should be able to get a successful adjustment following the directions given in the tech bulletins from Ford.

See exploded view on next page for parts identification numbers listed above.



# 3-Gearbox

5/2

usina